

WIRES-X Connection Cable Kit

SCU-57 / SCU-58

(for Windows 8.1/10/11)

Driver Installation Manual

Installing the PC Connection Cable driver software on a computer makes data transmission possible. Furthermore, if you have an internet environment on the go, using a compatible transceiver: FTM-400XDR/DE / FTM-400DR/DE / FTM-300DR/DE / FTM-200DR/DE / FTM-100DR/DE / FT5DR/DE / FT3DR/DE / FT2DR/DE (as of May 2022), you can use the WIRES-X Portable Digital Node (PDN) function to open a digital node station and enjoy more agile operation.

WIRES-X Connection Cable included items:

- SCU-57:** PC Connection Cable SCU-55, CT-44, and two audio cables
- SCU-58:** PC Connection Cable SCU-56 and an audio cable
- SCU-39:** PC Connection Cable SCU-19, CT-44, and two audio cables
- SCU-40:** PC Connection Cable SCU-20 and an audio cable



Do not connect the transceiver to the computer via the PC Connection Cable until the driver installation process has been completed. Connecting the PC Connection Cable to the computer before the driver installation has been completed may result in the wrong driver being installed and preventing proper operation.

System Requirements

Operating Systems

WIRES-X Connection Cable	Windows® 11	Windows® 10	Windows® 8.1
SCU-57 / SCU-58	✓	✓	✓
SCU-39 / SCU-40		✓	✓

NOTE: The SCU-39/SCU-40 can use the same driver software as the SCU-57/SCU-58, but the SCU-39/SCU-40 cannot be used with Windows 11.

Port

USB port (USB1.1/USB2.0)

Compatible transceiver

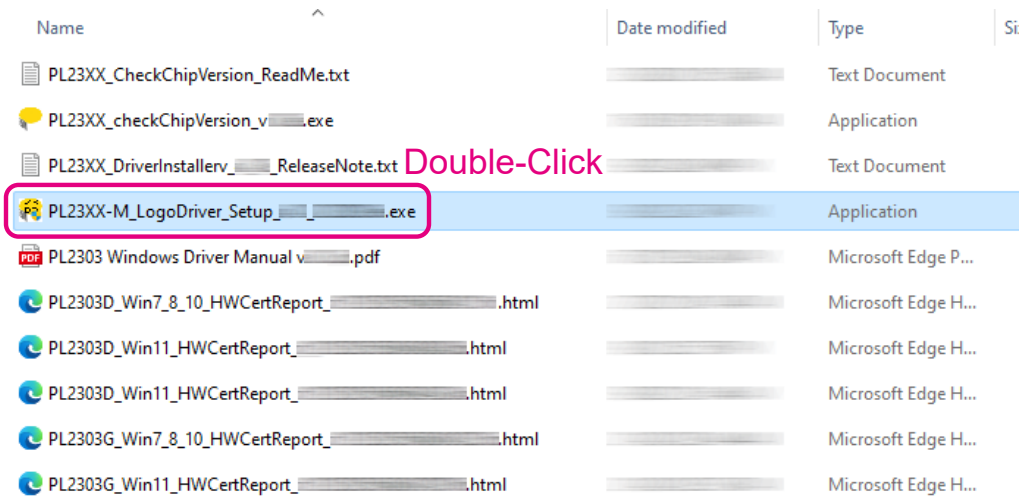
- WIRES-X Connection Kit SCU-57: FT5DR/DE / FT3DR/DE / FT2DR/DE
- WIRES-X Connection Kit SCU-58: FTM-400XDR/XDE / FTM-400DR/DE / FTM-300DR/DE / FTM-200DR/DE / FTM-100DR/DE / FTM-6000R/E

NOTE: FTM-6000R/E can use programming software with SCU-58/SCU-40, but it does not support the WIRES-X portable digital node function.

Important Notes

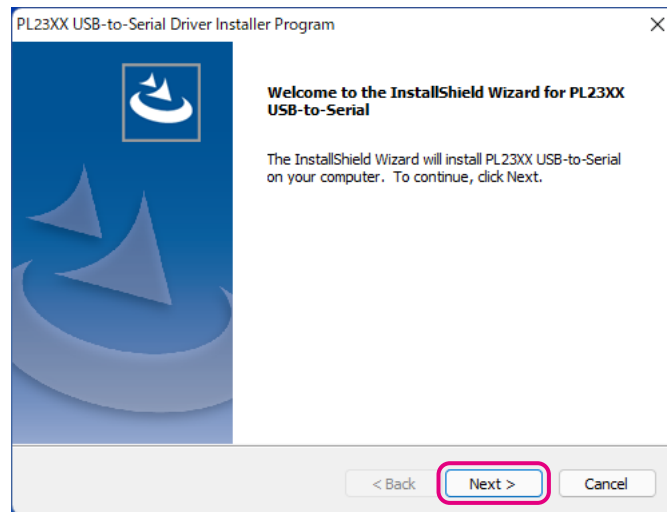
- All responsibility for the use of this software lies with the customer. Yaesu cannot be held responsible in any way for any damages or losses, which may be incurred by the customer as a result of using this software.
- Downloaded files are for personal use only.

4. Double-click the [PL23XX-M_LogoDriver_Setup_XXX_XXXXXXXX.exe] file in the unzipped folder.

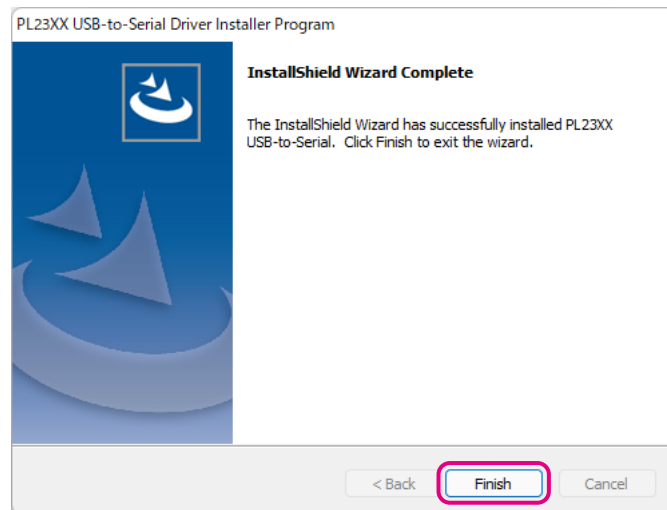


5. If the “User Account Control” screen appears, click the [Yes] button.

6. Click the [Next >] button.
The installation will start.

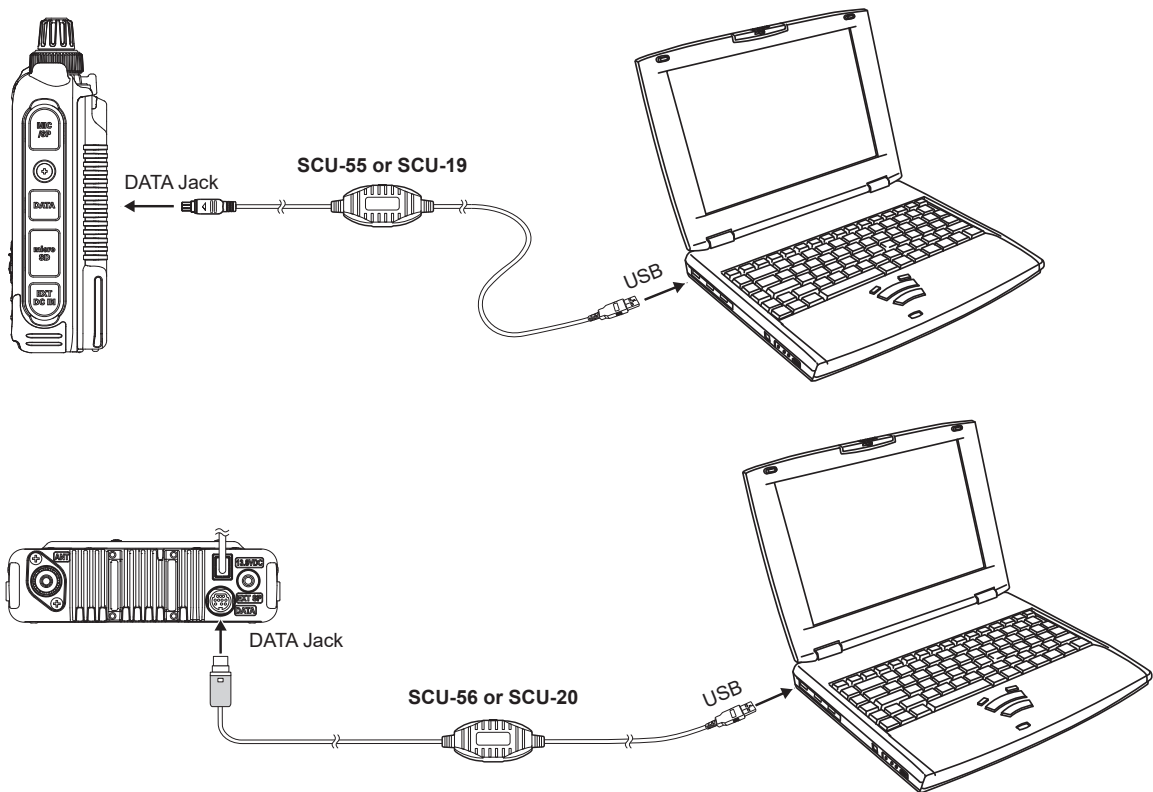


7. Click the [Finish] button to complete the driver installation.

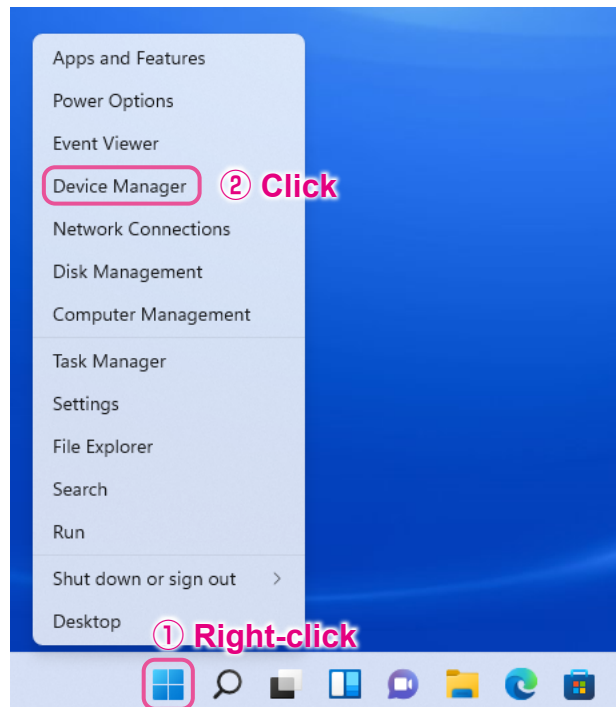


How to Confirm the Installation, and the COM Port Number

1. Refer to the below figure and connect the PC connection cable to the PC USB port.



2. Right-click the Windows **[Start]** button, then click **[Device Manager]**.
The Device Manager screen opens.



3. If the “**User Account Control**” screen appears, click the [**Yes**] button.
4. On the Device Manager screen, double-click [**Port (COM & LPT)**].



5. If the following is displayed, the driver installation is completed normally.
SCU-55/SCU-56: Prolific PL2303GC USB Serial COM Port (COM**)
SCU-19/SCU-20: Prolific USB-to-Serial Comm Port (COM**)
The number in the “(COM**)” portion may vary from computer to computer.
6. It is recommended to check the COM number for later use.



If “!” or “X” is displayed for the port on the Device Manager, uninstall and reinstall the driver.



Copyright 2022

YAESU MUSEN CO., LTD.

All rights reserved.

No portion of this manual may be reproduced without the permission of YAESU MUSEN CO., LTD.

YAESU MUSEN CO., LTD.

Tennozu Parkside Building

2-5-8 Higashi-Shinagawa, Shinagawa-ku, Tokyo 140-0002 Japan

YAESU USA

6125 Phyllis Drive, Cypress, CA 90630, U.S.A.

YAESU UK

Unit 12, Sun Valley Business Park, Winnall Close

Winchester, Hampshire, SO23 0LB, U.K.